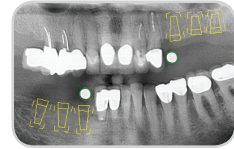




# DEXimplant™ Library

DEXIS Software Release 9.0.2 (05/10)

**DEXimplant™** is an optional DEXIS® software module. This powerful tool greatly simplifies implant planning and selection with its extensive library of implant models. It provides an accurate 2-D aid in determining placement near anatomic structures and long-term assessment of bone integration.



## Advance

AQB

## Altatec

See *Camlog®*

## Astra

Fixture  
Fixture ST

## Atlas

External Straight  
External Tapered  
Internal Straight  
Internal Tapered  
Submerged Straight  
Submerged Tapered

## BASIC

Omni-Tight™ Standard  
Omni-Tight™ Wide  
Omni-Tight™ Narrow

## BEGO

Semados®

## Bicon™

2mm Well  
3mm Well

## BioHorizons®

External (*formerly Maestro™*)  
Internal  
Overdenture™  
One-piece 3.0  
Single Stage  
Tapered Internal

## Camlog®

Cylinder-Line  
Root-Line  
Screw-Line

## Centerpulse

See *Zimmer Dental*

## Champions® Implants

Champions

## CWM-Atlas

See *Atlas*

## Dentaurum

Tiologic®  
Tiolox®

## Friadent

ANKYLOS®  
FRIALIT®-2  
Frialoc™  
IMZ®-TwinPlus  
XiVE®  
XiVE® TG

## Henry Schein Dental Depot GmbH

Alphatech®

## Imtec

MDI™ Mini

## Innova

See *Sybron Implant  
Solutions*

## ITI

See *Straumann*

## K.S.I.

Bauer-Schraube

## Lifecore

PrimaConnex™ Tapered  
PrimaConnex™ Straight  
PrimaSolo™  
Renova™ Tapered  
Renova™ Straight  
Restore® Threaded  
Restore® Cylinder  
Stage-1™

## MIS

BioCom  
Mistral  
Seven

## M&K Dental

ixx2®

## Nobel Biocare™

Brånemark System® Mk III  
Brånemark System® Mk IV  
NobelActive™  
NobelDirect™  
NobelDirect™ Posterior  
NobelPerfect® Groovy  
NobelReplace™ Straight  
NobelReplace™ Tapered  
NobelSpeedy™  
NobelSpeedy™ Replace

## Oraltronics

See *Sybron Implant  
Solutions*

## PerioSeal

Dental Implant System

## Schuetz-Dental

Impla™

## Straumann

ITI® PLUS  
ITI® Standard  
Tapered Effect

## Sybron Implant Solutions

Endopore®  
Endopore® 1 Stage  
Pitt-Easy®  
SybronPRO™ XRT  
SybronPRO™ TL

## Tatum

“D” Plateau  
“S” Cylindrical

## Thommen

SPI® System

## 3i

Osseotite™  
Osseotite™ XP  
Osseotite™ Certain®  
Osseotite™ Certain® Prevail™  
Osseotite™ Cylinder  
Osseotite NT™  
Osseotite NT™ Certain®

## Trinor® Titanium GmbH

GIP-Implant  
Q-Implant® (Q, QK, Q<sup>2</sup>, Q<sup>3</sup>)

## Wieland

wi.tal®

## Zimmer® Dental

AdVent®  
Screw-Vent®  
SwissPlus™  
Tapered Screw-Vent®  
Zimmer One-Piece

# DEXIS®

DEXIS, LLC

901 W. Oakton St., Des Plaines, IL 60018 • 1-888-883-3947 • www.dexis.com